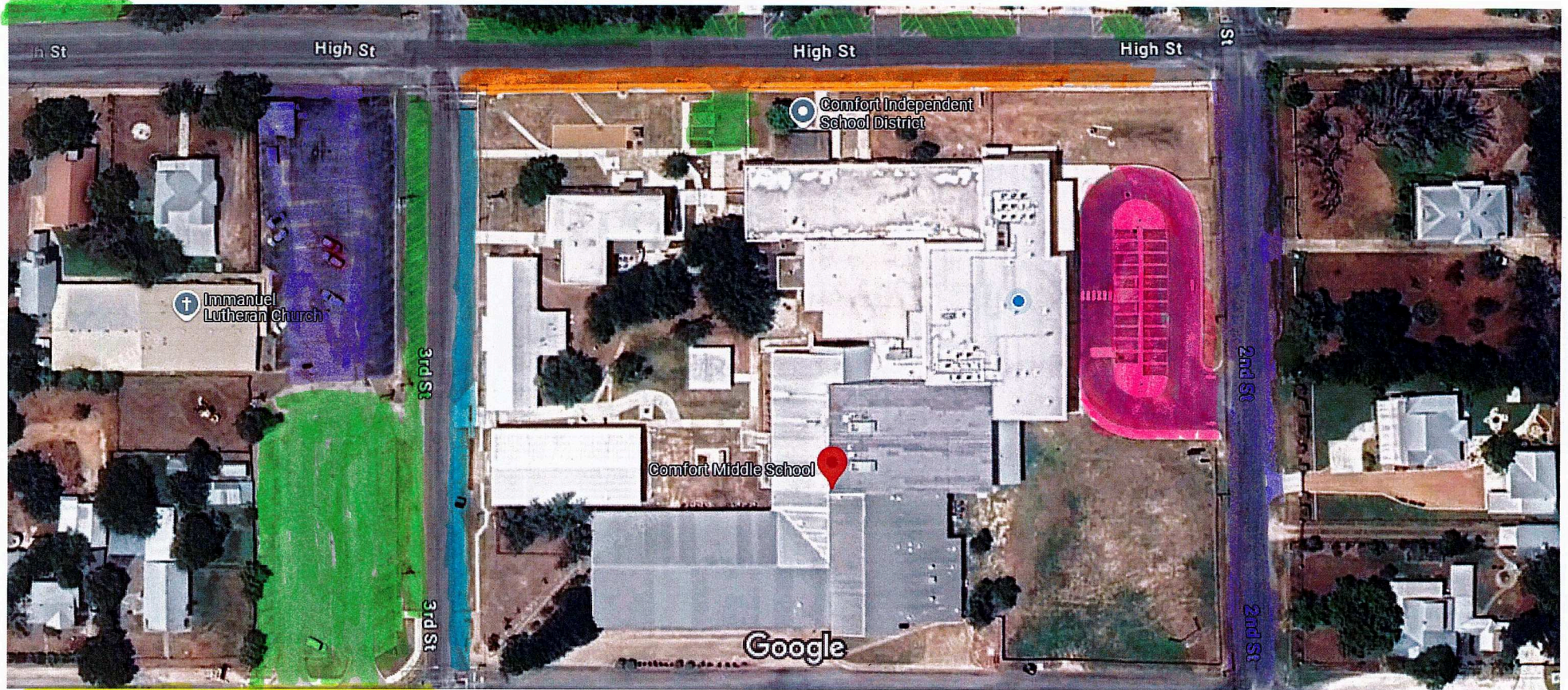




**Pull up drive for team unloading and loading. No parking in or around drive please. This is also the location of the ONLY ENTRY DOOR for teams and spectators. All other building doors are locked and accessible only by key card.**

**See Parking detail map for parking areas.**





**Volunteer Parking only**



**Team/Spectator Parking**



**Buses/Large vehicle parallel parking**



**Large vehicle and Car parallel parking**



**Overflow parking at Comfort Elementary  
(across the street)**



**No parking allowed. Reserved for church or  
Areas that are blocking to street traffic flow.**

**Do not block private drives!!! Obey signs and do not remove traffic cones. Be mindful of where you are parking to avoid issues. Private residences will tow if you block their driveways or park in them. Officer will be on duty to assist with parking directions.**